



# GateKeeper™ 3D 100

The GateKeeper™ 3D 100 sensor is used to enhance elevator door protection systems by providing sensor detection in front of the elevator cab entrance.

It is used with existing two-dimensional (2D) elevator door protection systems such as light curtains, single-beam sensors or mechanical edges to provide three-dimensional (3D) protection. The GateKeeper™ 3D 100 can be used for new elevator installations or for modernization of existing elevator systems.

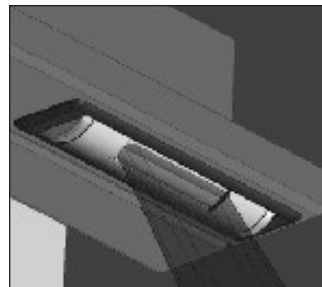
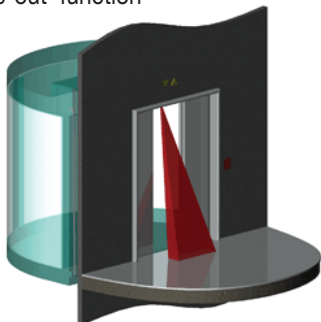
By using "Time of Flight" (TOF) technology, the GateKeeper™ 3D 100 sensor can detect the difference between a person or object approaching the elevator cab and a stationary person or object in the elevator cab entrance area.

The sensor's compact, low profile housing is optimized for difficult mounting locations, including narrow elevator cab transoms.

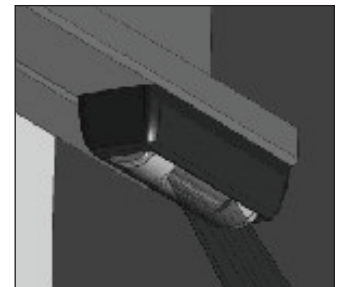
- Personal elevators
- Freight elevators
- Hospital elevators

## Features

- automatic door recognition and self-calibration
- distance / movement data ensures reliable operation
- very easy installation & integration
- compact design for flush or surface mounting
- intelligent 'Time-out' function



Flush mounting details



Surface mounting details

### Technical Data 3D Sensor

#### Application

Operating Range	20" to 118"
Active area at 2 m distance	8" x 35"
Number of pixels	768 (8 x 96)
Wave length	840 nm
Relative distance resolution	2" (8" above floor)

#### Connection Cable

Cable type and color	PVC, black
Cable length	20"
Connection cable	110"
Connecting plug	M8

#### 4 Wires

Brown	+10... 30VDC
Blue	GND (0 V)
Black	Output, PNP
White	Time-out selector (18 s or infinity)

#### Electrical

Supply Voltage Usp	+10... 30VDC (typ. 24VDC)
Ripple at supply voltage	10%
Current consumption (at 24V)	<200 mA
Resistive load	50mA
Capacitive load	100 nF
Output type	1 x PNP
Output logic	Low = object, high = no object
Optical illumination LED power	<0.5 W
Indication LED (status)	Red (object detected = on)
Response time	Typ. < 200 ms
Recalibration time	< 200 ms

#### Mechanical

Dimensions (w x h x d) in mm	4" x 1" x 0.9"
Mechanical adjustment range	+ or - 30° (continuously)
Enclosure rating	IP54
Temperature rating	-4° ... 140° F (-20° ... + 60° C)
Housing material	Aluminum, Polycarbonate

### GATEKEEPER™ 3D 100 ORDERING INFORMATION

Adams part no.	Description
A8503D100	3D Door Sensor