



p 1.800.929.9247
 f 1.312.348.6163
 e adams.parts@adamselevator.com
 w adamselevator.com/handrails

SOLID FLAT

INTERACTIVE E-FORM

Handrail Worksheet

More Parts Delivered Faster

Select a Handrail Size / Part No.

1.5" x .375" AHS1500 (L) 6.0" x .375" AHS6000 (L)
 2.0" x .375" AHS2000 (L) 8.0" x .375" AHS8000 S
 3.0" x .375" AHS3000 (L) 10.0" x .375" AHS10000 S
 4.0" x .375" AHS4000 (L) 12.0" x .375" AHS12000 S

econo-rail

1.5" x .500" AHT150S (Hollow S/S flat tube - NOT SOLID)
 2.0" x .375" AHT200S supplied with aluminum spacer mounts.

Select a Standard Finish

	Brushed	Polished*
Stainless Steel(S)	<input type="checkbox"/>	<input type="checkbox"/> (SP)
Bronze (#385 alloy).....(B)	<input type="checkbox"/>	<input type="checkbox"/> (BP)
Yellow Brass (#260 alloy) (YB)	<input type="checkbox"/>	<input type="checkbox"/> (YBP)
Copper(C)	<input type="checkbox"/>	<input type="checkbox"/> (CP)

*Additional charges apply.

Select a Spacer Type

In Cab Installation (Removable) Exterior Cab Installation

E-Form Instructions

To fill out e-form, click and type in highlighted form field areas. Use the Email button to send it. Click ends of rails to change styles.

If preferred you can print this form, fill out by hand and fax it to us.

Options*

Specialty Spacer Designs
Please add details and specifications to "notes" located at the bottom of this form to get a quote.

Architectural (CUSTOM) Handrail Designs
Please provide separate detailed drawings and specifications.

*Additional charges may apply.

Use an "X" to indicate additional spacers. Fill in your measurements between each spacer.

Qty: _____ Overall Length: _____

Qty: _____ Overall Length: _____

Qty: _____ Overall Length: _____

Qty: _____ Overall Length: _____

Qty: _____ Overall Length: _____

Qty: _____ Overall Length: _____

Company: _____
 Job Name: _____
 Order #: _____ P.O.#: _____
 Contact Name: _____
 Contact E-mail: _____
 Phone (____) ____ - ____ Fax (____) ____ - ____



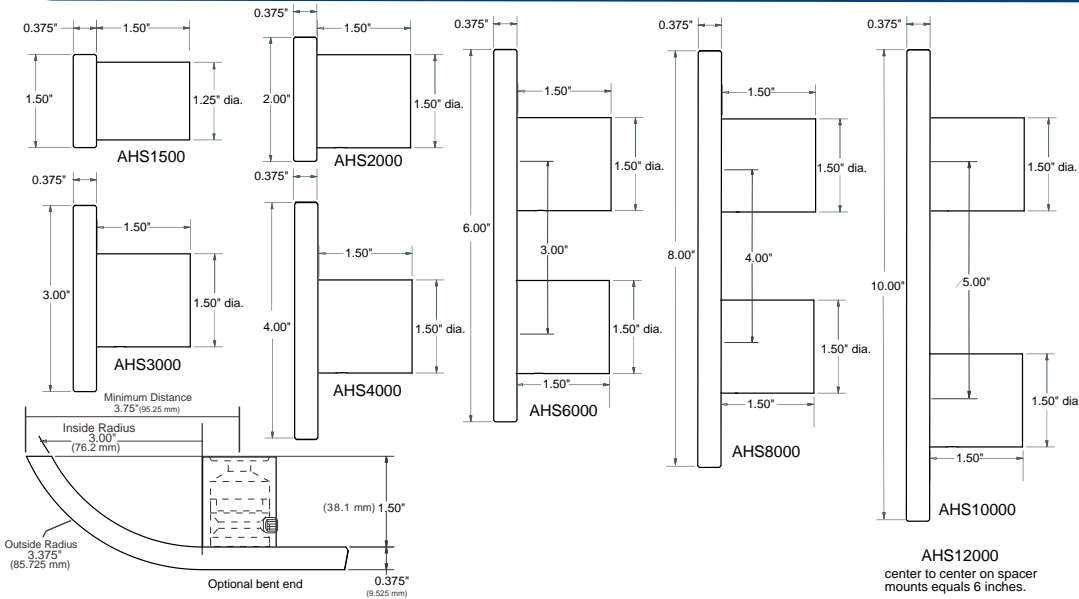
SHIP TO ADDRESS: _____

Order Notes: _____

Manufactured by



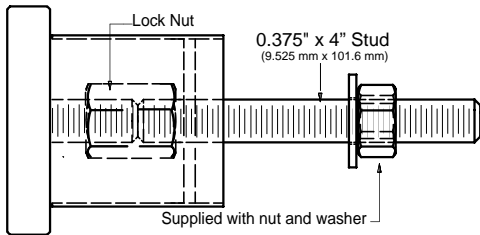
AHS1500-12000 series solid flat bar engineering data



Solid Flat Bar (Stainless / Brass / Bronze)

1.50" wide Actual weight = 2.36 lbs / foot (1.07 KG / 30.48cm) Shipping weights = 2.45 lbs / foot (1.11 KG / 30.48cm)
2.00" wide Actual weight = 3.05 lbs / foot (1.38 KG / 30.48cm) Shipping weights = 3.14 lbs / foot (1.42KG / 30.48cm)
3.00" wide Actual weight = 4.33 lbs / foot (1.97 KG / 30.48cm) Shipping weights = 4.42 lbs / foot (2.00KG / 30.48cm)
4.00" wide Actual weight = 5.80 lbs / foot (2.63 KG / 30.48cm) Shipping weights (crate) = 6.89 lbs / foot (3.13 KG / 30.48cm)
6.00" wide Actual weight = 7.98 lbs / foot (3.62 KG / 30.48cm) Shipping weights (crate) = 9.07 lbs / foot (4.12 KG / 30.48cm)
8.00" wide Actual weight = 11.60 lbs / foot (5.26 KG / 30.48cm) Shipping weights (crate) = 13.20 lbs / foot (6.26 KG / 30.48cm)
10.00" wide Actual weight = 14.6 lbs / foot (6.64 KG / 30.48cm) Shipping weights (crate) = 16.80 lbs / foot (7.68 KG / 30.48cm)

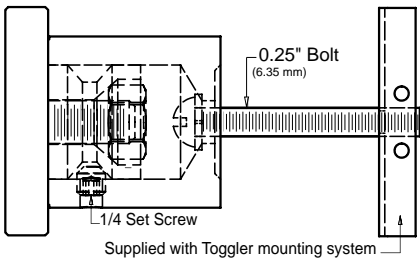
exterior cab installation spacer



PULL-OUT VALUES for 3/8" STUD

Handrail Thread-lock fastener engineered test data
Pull-out values for removal of threaded fasteners
from Lustre Products' handrails = 1509 lbs

in cab (removable) installation spacer

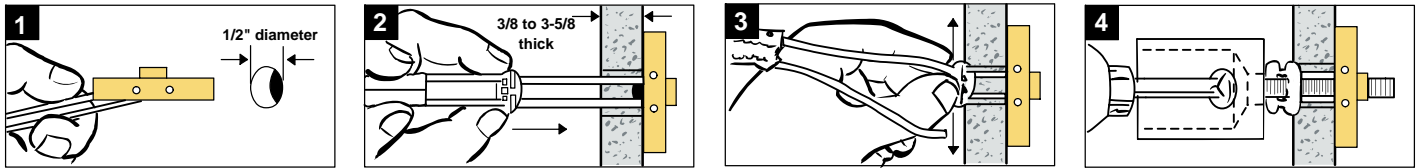


PULL-OUT VALUES for 1/4"-20 BOLT

265 lbs (120 kg) ultimate tensile load in 1/2" drywall
306 lbs (162 kg) ultimate tensile load in 5/8" drywall
925 lbs (420 kg) ultimate tensile load in concrete block
1,283 lbs (583 kg) ultimate tensile load in steel plate

Tests by independent test laboratory show ultimate load. Industry safety standards recommend 1/4 of the values for actual applications. Age and conditions of substrate will cause load values to vary.

In Cab Removable Handrail Spacer Installation Instructions



Care & Maintenance

Brass, Bronze & Copper Handrails

PLEASE NOTE: These handrails & components have a spray lacquer coating. To clean and maintain this lacquer coating: gently clean with a soft cloth, dampened with non abrasive soap and water. Brass or Bronze is a HIGH MAINTENANCE FINISH. Yellow metals will all naturally oxidize / tarnish with time and use. The acrylic metal lacquer coating WILL WEAR AWAY and remaining lacquer should be removed using lacquer thinner or other solvent. Cleaning handrail(s) with any chemical solution will directly soften and degrade the lacquer coating.

As the lacquer coating applied to your handrail(s) will wear, please note the following:

1. The original lacquer coating can be removed with standard xylene or lacquer thinner (available at most hardware stores - follow all related safety precautions)
2. Normal maintenance (polishing / buffing / Scotch-Brite satin finishing) procedures for Brass or Bronze will result in maintaining the #4 (brushed) or #8 (polished) finish.
3. You may prefer, at this time, to continue a program of hand maintenance to control oxidation as well as normal wear and tear using Scotch-Brite pads, Brasso, Miracle Shine, or other commercial metal polish.
4. If re-coating of the handrail is preferred, standard commercial spray lacquer is recommended as a versatile means of reducing the effects of oxidation.

THIS LACQUER COATING IS NOT WARRANTED. The lacquer on the handrail will degrade from normal use and typical wear and tear. It will require regular maintenance to control the effects of oxidation.

The workmanship and quality of these products is a reflection of our dedication to you.... our customer.

Manufactured by

